

PART OF THE SOUTHWEST QUARTER OF SECTION 31,
TOWNSHIP 17 NORTH, RANGE 20 EAST, W.M.

FD W.C. PER BK 1
OF SURVEYS, PG 19

S 99°46'40" E

2848.20'

C 1/4 COR SET
CALC., NOT SET

FD ENC MGN IN
C 1/4 E-W COUNTY RD
AT PROJECTED C/A
COUNTY RD TO SOUTH

11/17/2008 10:30:47 AM V. 25 P. 289 200811170813
KITTITAS COUNTY REGISTERED
PLAT

2729.49'
S 00°31'40" W

2912.72'

S 89°48'40" E

31 32

FD PIN & CAP
IN MON CASE
SEE BK 29 OF
SURVEYS, PG 115

LEGEND
SET 5/8" REBAR W/ YELLOW
CAP - CRUISE 18078
FOUND PIN & CAP
FENCE
EASEMENT
RECORD INFORMATION

GRAPHIC SCALE
(IN FEET)
1 inch = 200 ft.

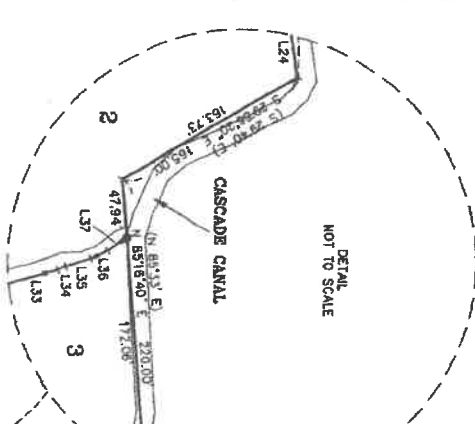
AUDITOR'S CERTIFICATE
Filed for record this 17th day of NOVEMBER,
2008 at 10:31 A.M. in Book 35 of Surveys of
page(s) 207 and in the request of Cruse & Associates.
SERAD V. PETTE, REC.
KITTITAS COUNTY CLERK

SURVEYOR'S CERTIFICATE
This map correctly represents a survey made by
me or under my direction in conformance with
the requirements of the Survey Recording Act
in NOVEMBER of 2008.

CHARLES A. CRUISE, JR.
Professional Land Surveyor
License No. 18078
11-17-08

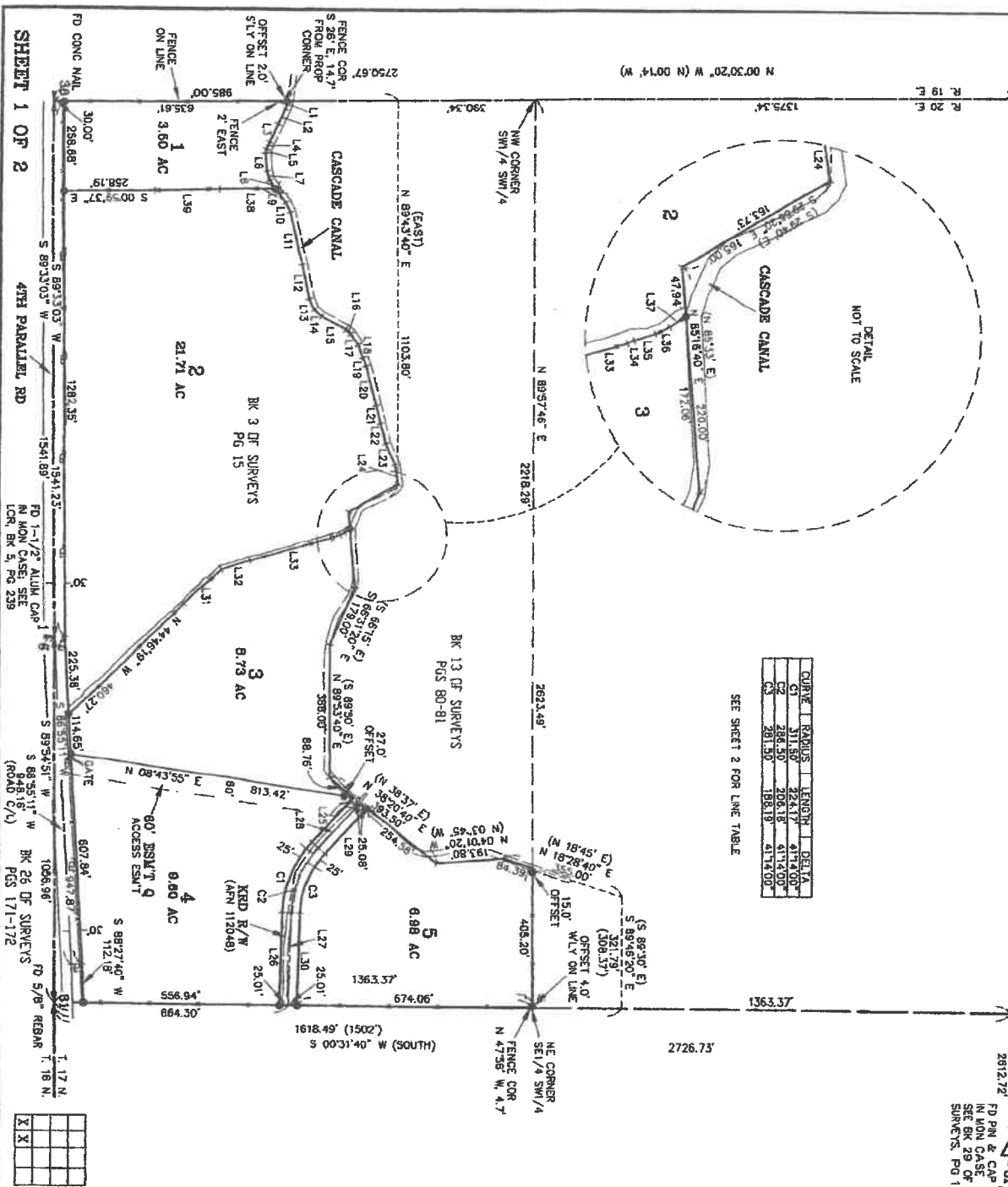
CRUISE & ASSOCIATES
PROFESSIONAL LAND SURVEYORS
217 East Fourth Street
Eliensburg, VA 86926 (509) 982-8242
COPPERHILL PROPERTY

PREVIOUS SURVEY
200811170813
35207



CURVE	RADIUS	LENGTH	DELTA
C1	311.50'	224.17'	41°14'00"
C2	288.50'	208.18'	41°14'00"
C3	281.50'	186.19'	41°14'00"

SEE SHEET 2 FOR LINE TABLE



SHEET 1 OF 2

4TH PARALLEL RD

FD CONC MAIL

FD 1-1/2" ALUM CAP
IN MON CASE SEE
LOR, BK 5, PG 238

FD 5/8" REBAR
PG 5/1-1/2

FD 5/8" REBAR
PG 5/1-1/2

FD 5/8" REBAR
PG 5/1-1/2

FD 5/8" REBAR
PG 5/1-1/2

FD 5/8" REBAR
PG 5/1-1/2

FD 5/8" REBAR
PG 5/1-1/2

FD 5/8" REBAR
PG 5/1-1/2

FD 5/8" REBAR
PG 5/1-1/2